

**PLATEAU VALLEY HOSPITAL DISTRICT BOARD MEETING MINUTES**  
**Tuesday, April 21, 2009**

Attendance: Board: Helen Spence, Frank Wagner, Dave Bristol, Denny Holmes, Bob Wilson.  
 Staff: Jessi Clark, Shannon Currier, Dr. Woodyard (17:30)  
 Other: Jim Gavegan of Wachovia Securities

MEETING WAS CALLED TO ORDER AT 17:24 BY HELEN SPENCE, PRESIDENT.

1. PRESENTATION

- Jim Gavegan presented information on different options the District has for investing money. There was discussion of what criteria must be met for a Special District to invest or save money.

2. MINUTES

March 17, 2009 Regular Meeting

- **Resolution 1:** Be it resolved that the minutes of the March 17, 2009 regular meeting be approved as presented. Dave Bristol motioned and Denny Holmes seconded. Motion carried unanimously.

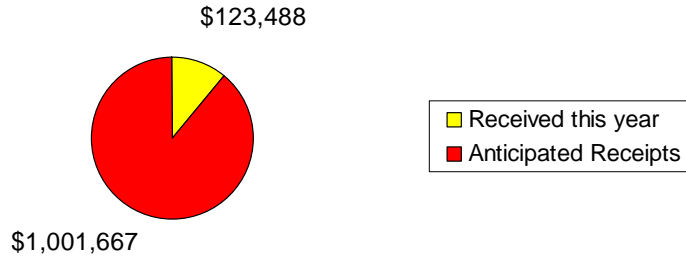
3. CLINIC CONSULTANT REPORT

- Blue Cross/Blue Shield is going to keep the fee schedule based on the 2008 Medicare numbers, which is higher than the 2009. This is a good thing for the clinic as there are a lot of Blue Cross/Blue Shield patients.
- Rocky Mountain HMO is still currently under the fee schedule freeze until 2012. Many of the doctors in Grand Junction are unhappy with this and may push to change that.
- Mesa County was designated a Health Professional Shortage Area (HPSA), but not eligible for the increase in Medicare reimbursements.
- Many of the Medicare plans are disappearing. Most likely, it will go back to straight Medicare with a supplement. There will probably be a push for the Rocky Mountain Medicare plan.
- We need to rewrite our collection policies to allow for more time to apply for Hill Burton. This will slow down on the collection of those accounts.

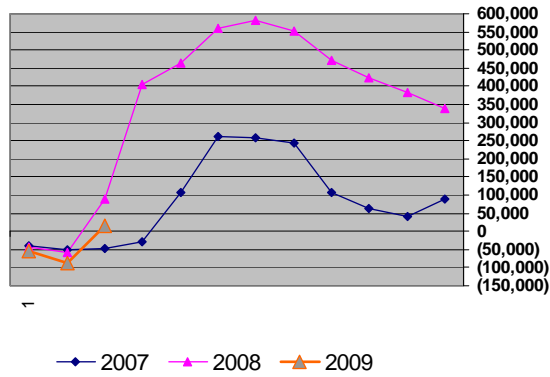
4. CONSULTANT CPA REPORT

					March, 2009				
		Charges	Write Offs Misc. Inc.	Net Receipts		Operating Expense	Net Ordinary Income	Other Income/Exp	Net Income/(Loss)
	Clinic- Collbran	41,307.10	-8,212.31	33,094.79		-63,982.99	-30,888.20	0.00	-30,888.20
	Clinic-Mesa	9,249.10	-3,077.63	6,171.47		-9,433.09	-3,261.62	225.00	-3,036.62
	Construction	0.00	0.00	0.00		0.00	0.00	0.00	0.00
	Grant	0.00	0.00	0.00		0.00	0.00	0.00	0.00
	Administrative	749.00	0.00	749.00		0.00	749.00	135,525.11	136,274.11
	Total	51,305.20	11,289.94	40,015.26		-73,416.08	-33,400.82	135,750.11	102,349.29

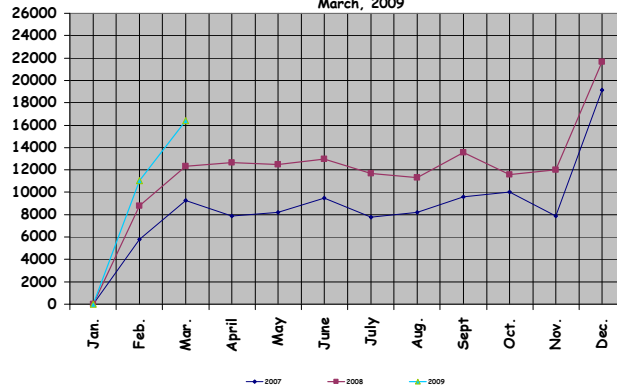
Property Tax Status  
as of March, 2009

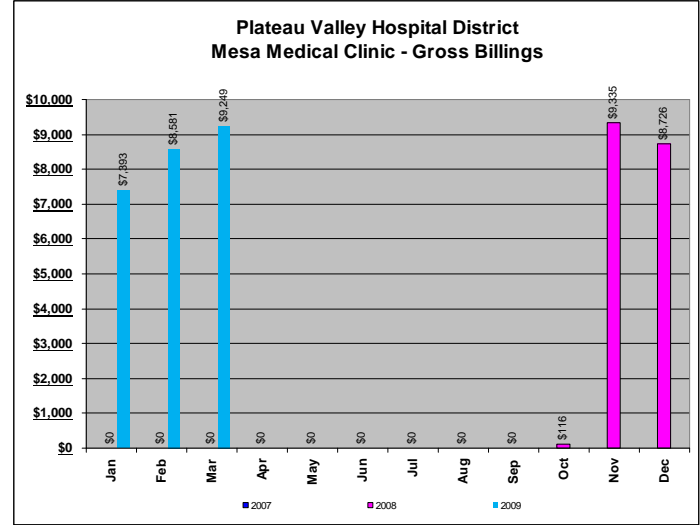
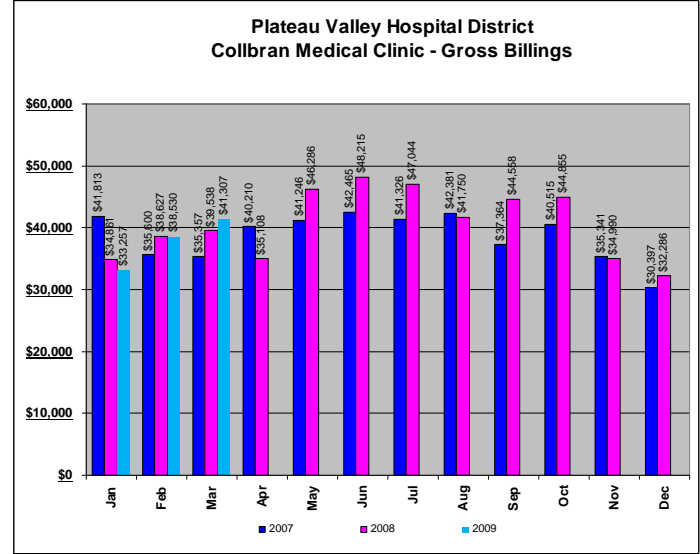
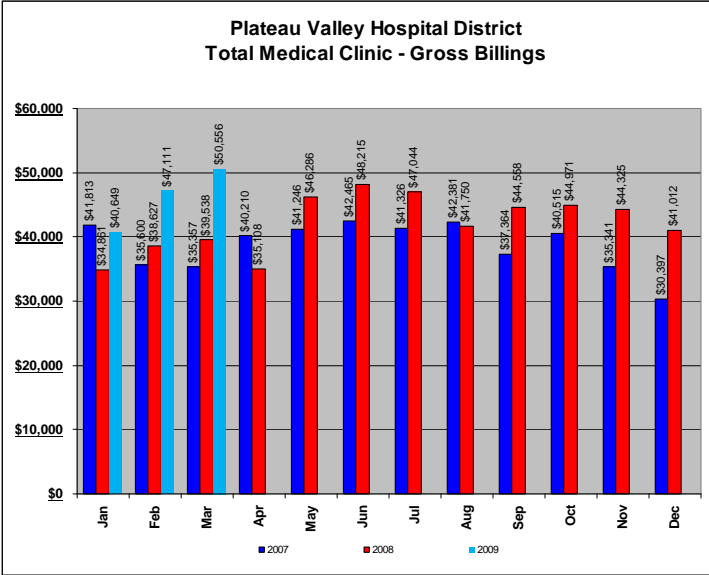


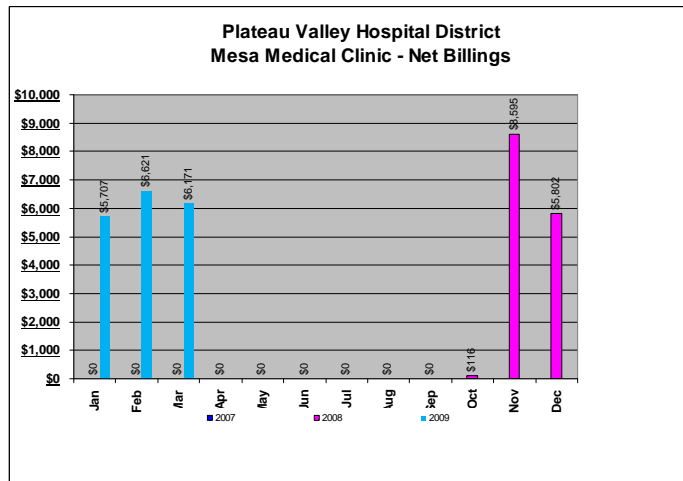
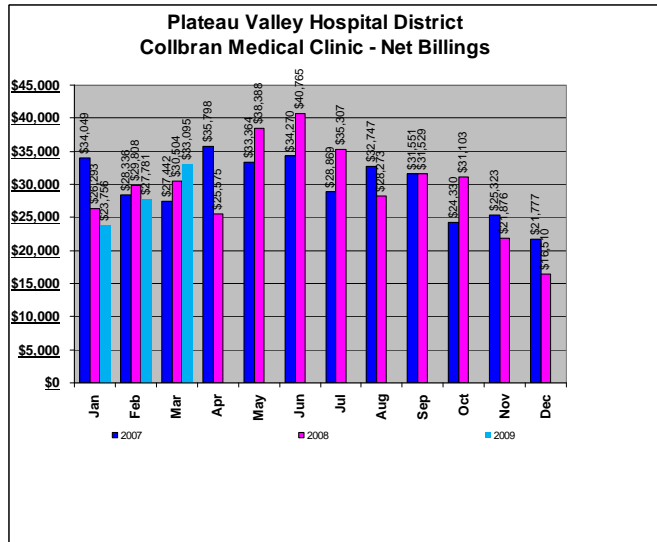
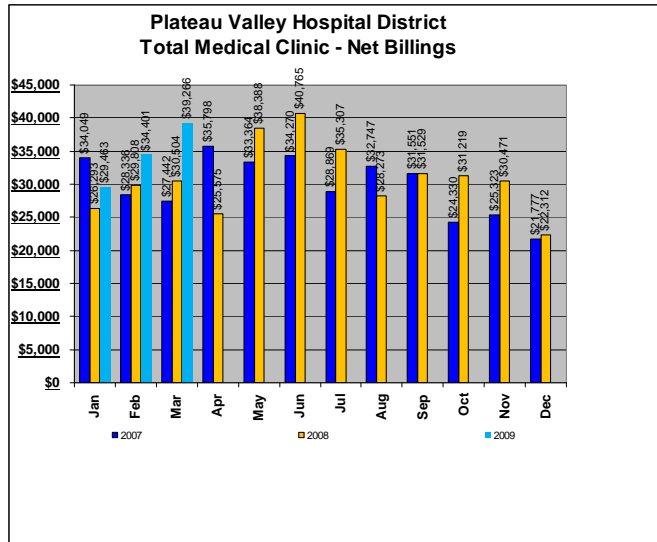
Plateau Valley Hospital District  
Year-to-Date  
Net Income/(Loss)



Monthly Distribution of Specific Ownership Tax  
March, 2009







- There was a review of the District's cash flow to determine what amounts could be invested. It was decided that this will become a regular part of the Board Meeting.
- **Resolution 2:** Be it resolved that the Board of Directors authorize Jessi Clark to move \$150,000 in \$50,000 increments to the best yielding certificates of deposit in the six month to a one year ranges. Denny Holmes motioned and Frank Wagner seconded. Motion carried unanimously.
- **Resolution 3:** Be it resolved that the accounts payable and payroll checks (#46688, #46706-46749) are approved. Bob Wilson motioned and Denny Holmes seconded. Motion carried unanimously.
- **Resolution 4:** Be it resolved that the Board of Directors approves the March write-offs in the amount of \$11,289.94. Dave Bristol motioned and Denny Holmes seconded. Motion carried four to one with Frank Wagner as the nay vote.

5. ENVIRONMENTAL SERVICES

- There was discussion of the porch at the Clinic entry. Frank will redesign and talk to Clint about redoing it.
- **Resolution 5:** Be it resolved that the Board of Directors approves the expense to fix the porch area of the Clinic. Frank Wagner motioned and Denny Holmes seconded. Motion carried unanimously.
- There was discussion of getting the signs hung on the Mesa Clinic.

6. OLD BUSINESS

- Wage Scale – Dave presented the wage scale. The new scale provides for annual increases plus merit based increases. These numbers can be easily changed should the Board decide to increase or decrease them.
- **Resolution 6:** Be it resolved that the Board of Directors accepts the new wage scale. Bob Wilson motioned and Frank Wagner seconded. Motion carried unanimously.
- Long-term planning – There was discussion of setting up a meeting with the school for future land use.
- **Resolution 7:** Be it resolved that the Board of Directors approves to set up a meeting with the school for pursuing a land lease for future building. Denny Holmes motioned and Bob Wilson seconded. Motion carried unanimously.

7. NEW BUSINESS

- Nothing presented.

8. CLINIC REPORT

- census

	Jan	Feb	Mar	Apr	May	Jun	Jul	Aug	Sept	Oct	Nov	Dec	YTD
Total Dr Appt	256	309	299										864
# Days	21	20	22										63
Ave/Day	12.19	15.45	13.59	####	####	####	####	####	####	#####	#####	####	13.71
Lab/Inj	79	80	82										241
Pharm	23	15	18										56
AH Pharm	0	1	0										1
After Hours	6	1	6										13
Other	8	13	9										30
Paged Calls	77	70	51										198
Clinic New Pt	26	28	20										74
Clinic 1X Pt	4	2	0										6
<b>M - Dr Appt</b>	<b>68</b>	<b>93</b>	<b>73</b>										<b>234</b>
<b>M - # 1/2 Days</b>	<b>13</b>	<b>9</b>	<b>13</b>										<b>35</b>
<b>M - Ave/1/2 day</b>	<b>5.23</b>	<b>10.33</b>	<b>5.62</b>	<b>####</b>	<b>####</b>	<b>####</b>	<b>####</b>	<b>####</b>	<b>####</b>	<b>#####</b>	<b>#DIV/0!</b>	<b>####</b>	<b>6.69</b>
<b>M - MA appt</b>	<b>8</b>	<b>9</b>	<b>10</b>										<b>27</b>
<b>M - Pharm</b>	<b>0</b>	<b>0</b>	<b>2</b>										<b>2</b>
<b>M - New Pt</b>	<b>17</b>	<b>9</b>	<b>7</b>										<b>33</b>
<b>M - 1 X Pt</b>	<b>0</b>	<b>0</b>	<b>0</b>										<b>0</b>

Collbran Clinic

2009	EW pt	EW days	EW ave	SR pt	SR days	SR ave	LW pt	LW day	LW ave
Jan	112	10	11.20	118	9	13.11	26	2	13.00
Feb	134	9	14.89	149	9	16.56	26	2	13.00
Mar	92	7.5	12.27	167	12	13.92	40	2.5	16.00
Apr			#DIV/0!			#DIV/0!			#DIV/0!
May			#DIV/0!			#DIV/0!			#DIV/0!
Jun			#DIV/0!			#DIV/0!			#DIV/0!
Jul			#DIV/0!			#DIV/0!			#DIV/0!
Aug			#DIV/0!			#DIV/0!			#DIV/0!
Sep			#DIV/0!			#DIV/0!			#DIV/0!
Oct			#DIV/0!			#DIV/0!			#DIV/0!
Nov			#DIV/0!			#DIV/0!			#DIV/0!
Dec			#DIV/0!			#DIV/0!			#DIV/0!
<b>Totals</b>	<b>338</b>	<b>26.5</b>	<b>12.75</b>	<b>434</b>	<b>30</b>	<b>14.47</b>	<b>92</b>	<b>6.5</b>	<b>14.15</b>

Mesa Clinic

2009	EW pt	EW days	EW ave	SR pt	SR days	SR ave	LW pt	LW days	LW ave
Jan	6	2	3.00	18	2	9.00	44	9.00	4.89
Feb	16	2	8.00	19	2	9.50	58	8.00	7.25
Mar	2	1	2.00	31	4	7.75	40	8.00	5.00
Apr			#####			#####			#DIV/0!
May			#####			#####			#DIV/0!
Jun			#####			#####			#DIV/0!
Jul			#DIV/0!			#DIV/0!			#DIV/0!
Aug			#DIV/0!			#DIV/0!			#DIV/0!
Sep			#DIV/0!			#DIV/0!			#DIV/0!
Oct			#DIV/0!			#DIV/0!			#DIV/0!
Nov			#DIV/0!			#DIV/0!			#DIV/0!
Dec			#DIV/0!			#DIV/0!			#DIV/0!
<b>Totals</b>	<b>24</b>	<b>5</b>	<b>4.80</b>	<b>68</b>	<b>8</b>	<b>8.50</b>	<b>142</b>	<b>25.00</b>	<b>5.68</b>

- Physician Report s  
Nothing presented.
- Office Manager Report  
Physical Therapy – St. Mary's is evaluating whether it is financially reasonable to continue to send a therapist up here.  
Board Newsletter – It is in the works.  
Mesa Hours – The staff needs expand the hours to open at 12:30PM for blood draws before patients doctor visits.  
Cast Saw – The Mesa Clinic needs their own cast saw. A new one is \$991. We will buy if we can not find one used.
- **Resolution 8:** Be it resolved that the Board Directors approves the purchase of a cast saw for the Mesa Clinic for \$991. Bob Wilson motioned and Dave Bristol seconded. Motion carried unanimously.  
Saturday Coverage - Dr. Walters needs Saturday, May 9 off. It was decided it was easier to close for the half day than try to find coverage.  
SDA Workshop – There is a Special District Association Workshop in Grand Junction in May. Dave would like to go and Helen is looking into whether she can.

9. APRIL EVALUATION / RAISES

- Annual: None
- 3 Month: None

Meeting adjourned at 19:16.

Respectfully submitted,

Jessi Clark, secretary to the Board